

SPECIFICATIONS

Model No.	Design Capacity		Element Quantity	Vessel Staging	RO Feed (gpm)	RO Reject (gpm)	System Piping Connections			Operating Pressure	Pump Hp	Approx. Ship Wt.
	(gpm)	(gpd)					Inlet Feed	Permeate	RO Reject			
MRO-36K-8H	25	36,000	6	1/1	31-33	6-8	1 1/2" Flg.	1 1/2" Flg.	1" Flg.	250 psi	10 HP	3000 lb.
MRO-50K-8H	35	50,400	9	1/1/1	44-47	8-12	2" Flg.	1 1/2" Flg.	1" Flg.	240 psi	15 HP	3300 lb.
MRO-72K-8H	50	72,000	12	2/1/1	62-67	12-17	2" Flg.	2" Flg.	1" Flg.	250 psi	20 HP	3500 lb.
MRO-94K-8H	65	93,600	16	2/1/1	81-87	16-22	2 1/2" Flg.	2" Flg.	1 1/2" Flg.	250 psi	25 HP	3900 lb.
MRO-115K-8H	80	115,200	20	2/2/1	100-107	20-27	2 1/2" Flg.	2 1/2" Flg.	1 1/2" Flg.	250 psi	25 HP	4100 lb.
MRO-144K-8H	100	144,000	24	3/2/1	125-133	24-32	2 1/2" Flg.	2 1/2" Flg.	1 1/2" Flg.	250 psi	30 HP	4500 lb.
MRO-180K-8H	125	180,800	30	3/2	156-167	31-42	3" Flg.	3" Flg.	2" Flg.	240 psi	40 HP	4900 lb.
MRO-216K-8H	150	216,000	36	4/2	175-187	35-47	3" Flg.	3" Flg.	2" Flg.	240 psi	50 HP	5100 lb.
MRO-252K-8H	175	252,000	42	4/3	200-213	40-53	4" Flg.	3" Flg.	2" Flg.	240 psi	50 HP	5500 lb.
MRO-288K-8H	200	288,000	48	5/3	250-267	50-67	4" Flg.	4" Flg.	2" Flg.	255 psi	60 HP	5900 lb.
MRO-324K-8H	225	324,000	54	5/4	281-300	56-75	6" Flg.	4" Flg.	3" Flg.	255 psi	2 @ 40 HP	6600 lb.
MRO-360K-8H	250	360,000	60	6/4	313-333	63-83	6" Flg.	4" Flg.	3" Flg.	255 psi	2 @ 40 HP	7300 lb.

* Contact factory for flow rates beyond 250-gpm.

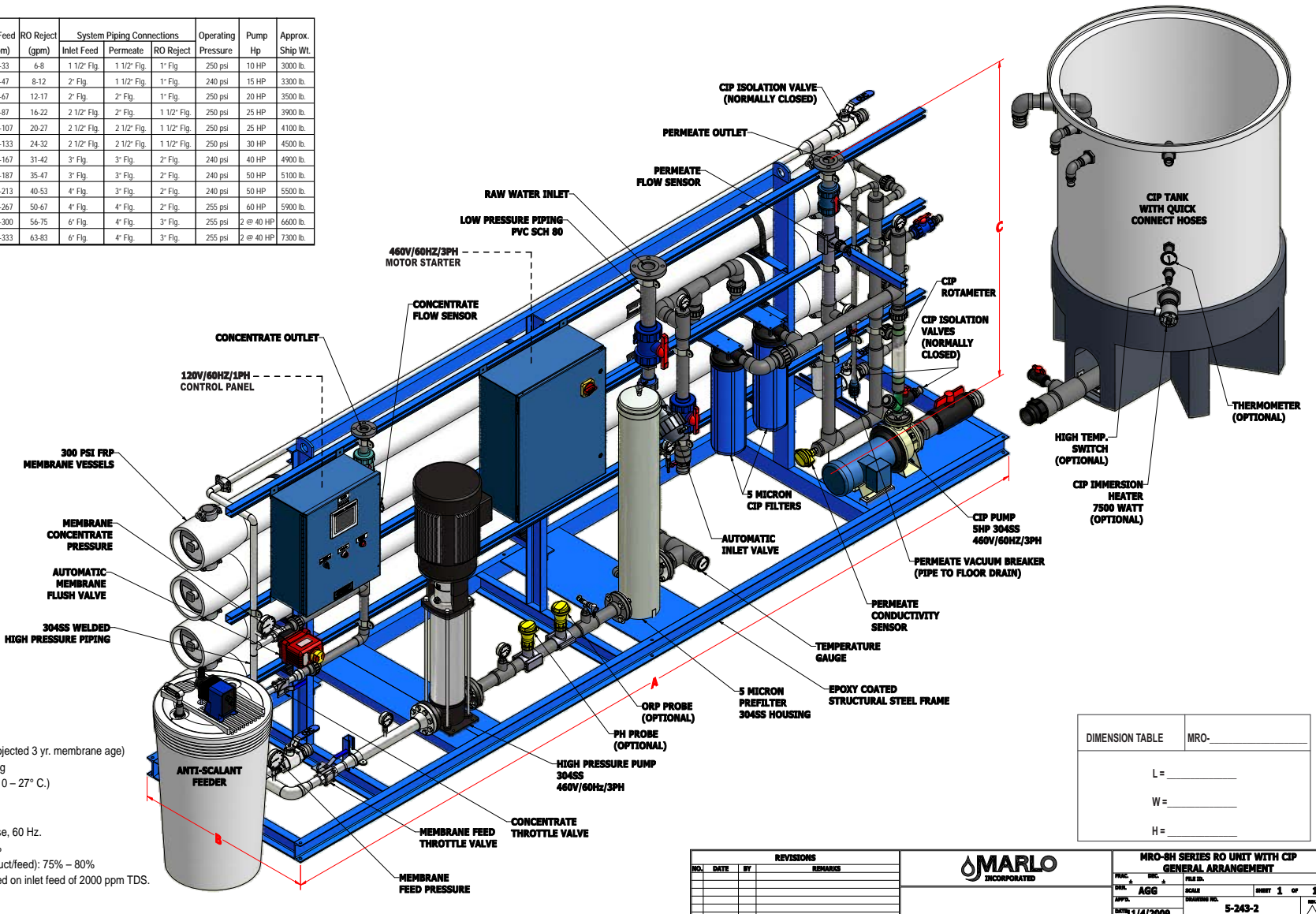
DIMENSIONS

Model No.	Length*			Height
	A	B	C	
MRO-36K-8H	146"	40"	82"	82"
MRO-50K-8H	146"	40"	82"	
MRO-72K-8H	146"	40"	82"	82"
MRO-94K-8H	194"	46"	82"	
MRO-115K-8H	194"	46"	82"	94"
MRO-144K-8H	194"	46"	94"	
MRO-180K-8H	274"	50"	86"	86"
MRO-216K-8H	274"	50"	94"	
MRO-252K-8H	274"	60"	86"	86"
MRO-288K-8H	274"	70"	86"	
MRO-324K-8H	274"	76"	86"	86"
MRO-360K-8H	274"	76"	86"	

* Requires minimum of 45" additional length on each side of the skid for membrane installation or removal.

PARAMETERS

- Operating Pressures: 240 – 255 psig (at projected 3 yr. membrane age)
- Minimum system inlet feed pressure: 30 psig
- Operating temperature range: 50 – 80° F. (10 – 27° C.)
- Maximum inlet free chlorine: <0.1 ppm
- Maximum inlet silt density index (SDI): 3.0
- Standard electrical power: 460 VAC, 3-phase, 60 Hz.
- Nominal system TDS reduction: 95% – 99%
- Nominal system overall recovery rate (product/feed): 75% – 80%
- Projected performance and operations based on inlet feed of 2000 ppm TDS.



DIMENSION TABLE	MRO-_____
L =	_____
W =	_____
H =	_____

REVISIONS			
NO.	DATE	BY	REMARKS



MRO-8H SERIES RO UNIT WITH CIP GENERAL ARRANGEMENT			
PLAC. NO.	SCALE	DRAWING NO.	REV. 1 OF 1
APP. AGG		5-243-2	
DATE 1/14/2009			