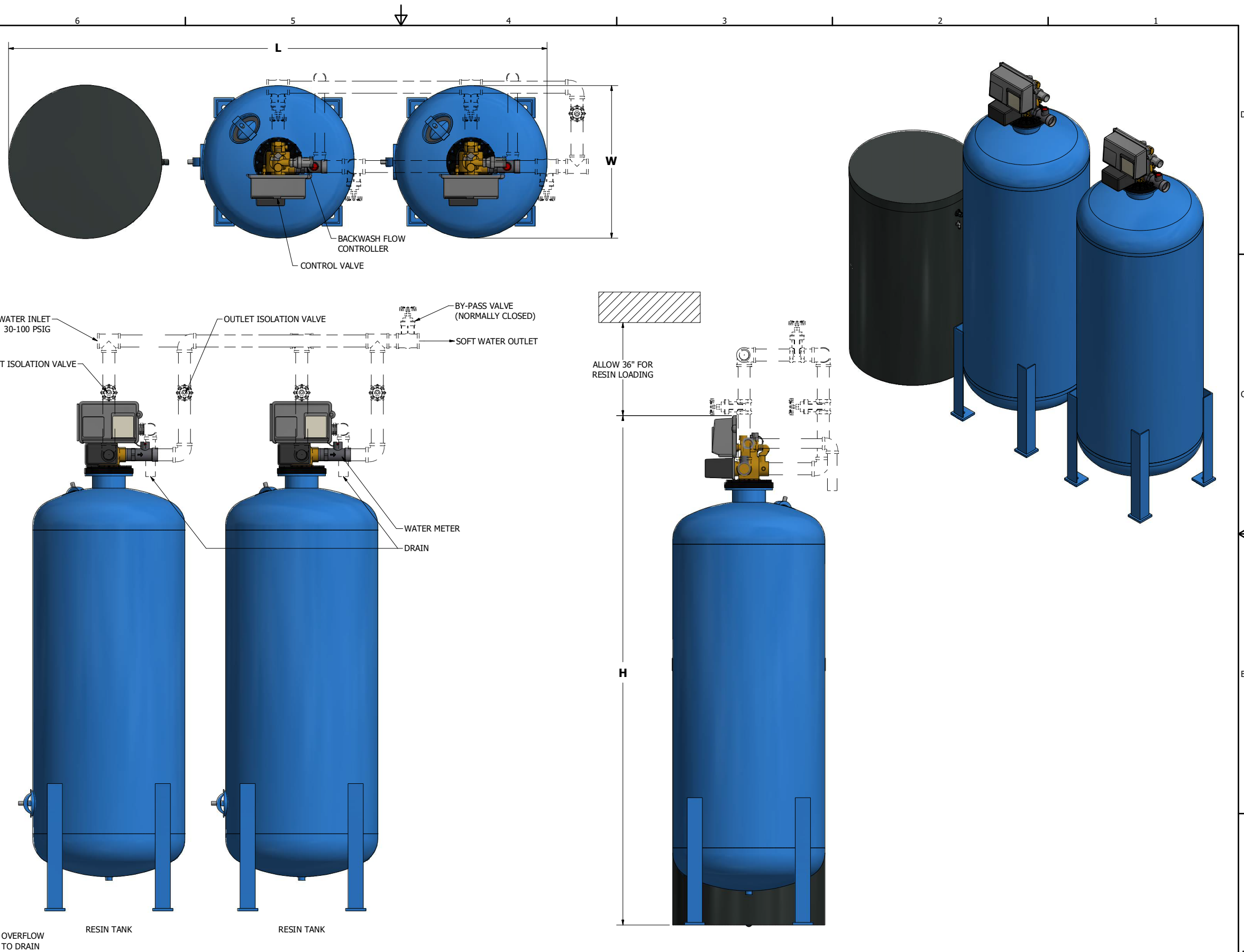


CONNECTION SCHEDULE					
ITEM	DESCRIPTION	LOCATION	MAX. FLOW	CONNECTION	MATERIAL
A	HARD WATER INLET	WATER SOFTENER	GPM	NPT	BRASS
B	SOFT WATER OUTLET	WATER SOFTENER	GPM	NPT	BRASS
C	WASTE TO DRAIN	WATER SOFTENER	GPM	NPT	GALV

DIMENSIONS		
LENGTH	WIDTH	HEIGHT

**NOTES:**

1. ALL PIPING, FITTINGS, ETC SHOWN WITH HIDDEN LINES ARE PROVIDED BY OTHERS.
2. GENERAL PLUMBING CONNECTIONS ARE SHOWN FOR CLARITY ONLY.
3. PRESSURE VESSELS ARE 100 PSI NON-CODE CONSTRUCTION WITH EPOXY LINED INTERIOR AND FINISH PAINTED EXTERIOR.
4. PRESSURE VESSEL INTERIOR DISTRIBUTION SYSTEM IS SCH 80 PVC.
5. SOFTENER RESIN AND SUPPORT GRAVEL IS SHIPPED SEPARATELY AND IS TO BE LOADED AFTER INSTALLATION.
6. FLECK VALVES HAVE NXT2 CONTROLLERS.



**PRELIMINARY - NOT FOR CONSTRUCTION**

THIS DOCUMENT CONTAINS CONFIDENTIAL AND PROPRIETARY INFORMATION THAT CANNOT BE REPRODUCED OR DIVULGED, IN WHOLE OR PART, WITHOUT AUTHORIZATION IN WRITING FROM MARLO INCORPORATED, RACINE, WI.

REVISIONS			
NO.	DATE	BY	REMARKS



FRAC.	DEC.
SCALE	+
DRN.	Anthony
CHECKED	
APPD.	
DATE	5/17/2019
SHEET	1 OF 1

MST DUPLEX PROGRESSIVE WATER SOFTENER - TOP MOUNT GENERAL ARRANGEMENT

DRAWING NO.

